

SCOTT &
STAPLETON

ROYSTON AVENUE
Southend-On-Sea, SS2 5LA
£1,700 Per Month

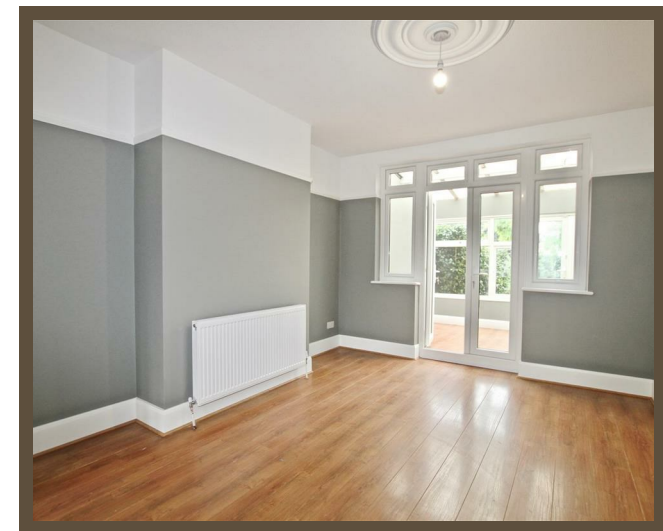
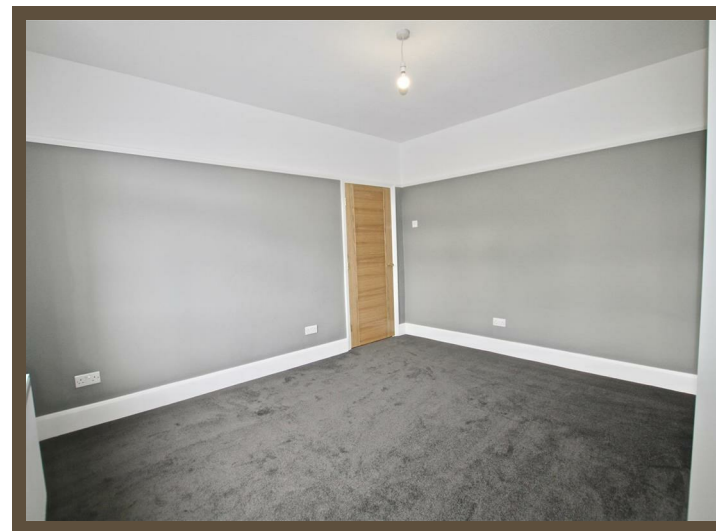
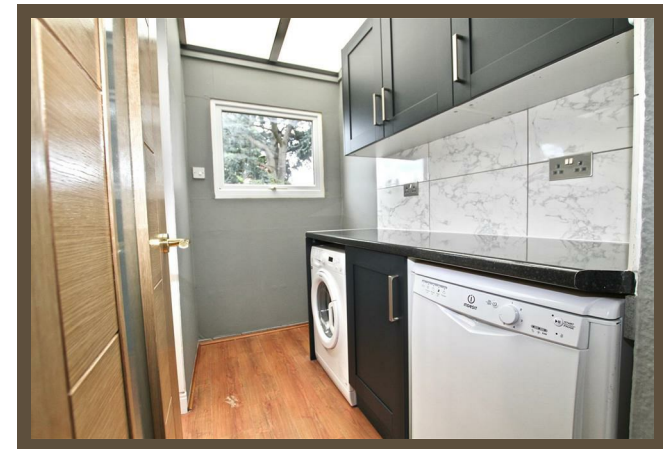




ROYSTON AVENUE
SOUTHEND-ON-SEA, SS2 5LA

**£1,700 per
month**

Scott & Stapleton are pleased to offer to the rental market this delightful, refurbished three bedroom family home, with large lounge diner, conservatory, newly fitted kitchen plus utility room, approx 70ft rear garden, two double bedrooms, one single bedroom and family bathroom with separate WC. Situated in popular location within close proximity to Prittlewell train station, Southend City centre and local amenities. Offered unfurnished.



Hallway

Lounge diner

7.92m x 3.78m (25'11" x 12'4")

Kitchen

2.8m x 2.16m (9'2" x 7'1")

Utility room

2.34m x 1.32m (7'8" x 4'3")

Conservatory

Stairs and first floor landing

Bedroom one

3.78m x 3.48m (12'4" x 11'5")

Bedroom two

3.78m x 3.4m (12'4" x 11'1")

Bedroom three

2.51m x 2m (8'2" x 6'6")

Bathroom

Wc

Rear garden

